

AGING RESIDENTIAL AREAS IN RURAL GERMANY.

CHALLENGES AND SMART RESPONSES

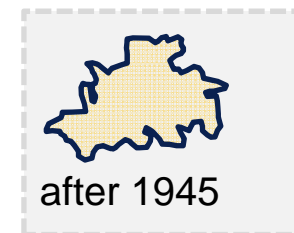
Markus Schaffert
Hochschule Mainz

1. German villages & their single-family housing areas
2. Dealing with the challenge
 - a. Influencing factors & Indicators
 - b. Data & GIS-based analyses

Villages and rural cities in Germany



Changing villages – structure, demographics



Year: Inhabitants

1829: 1101

1939: 2011

1961: 3626

2011: 10.640

2000-2011

-2,3%

(Hessenagentur)

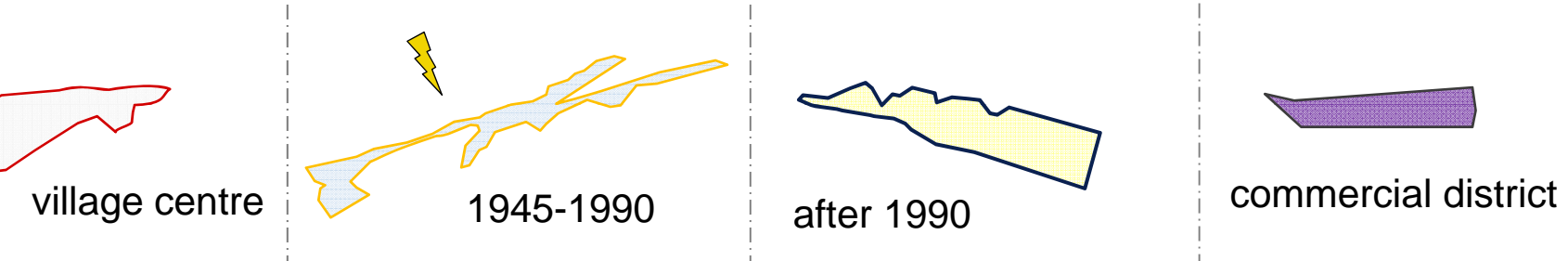
Fürth Odw. 2015,
aerial picture: google maps



as
of 773
at time



Changing villages – structure, demographics



Generation change & aging of residents

in single-family housing areas

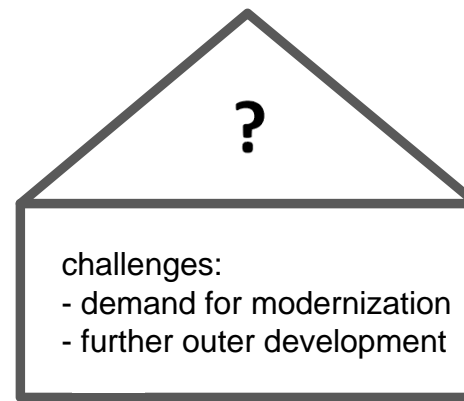
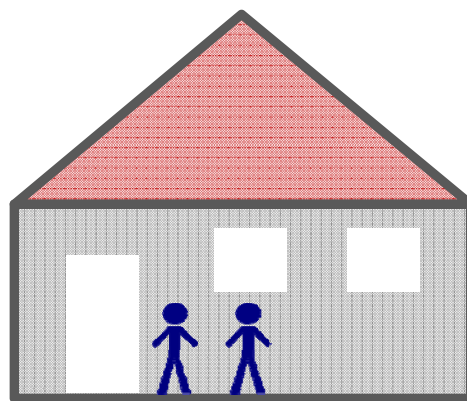
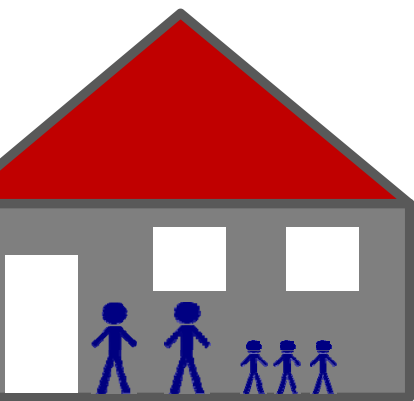
long term vacancy?!

village's image

more than 12 million
SFHs in Germany

Deilmann; Lorbeck 2016,
Statistisches Bundesamt 2014

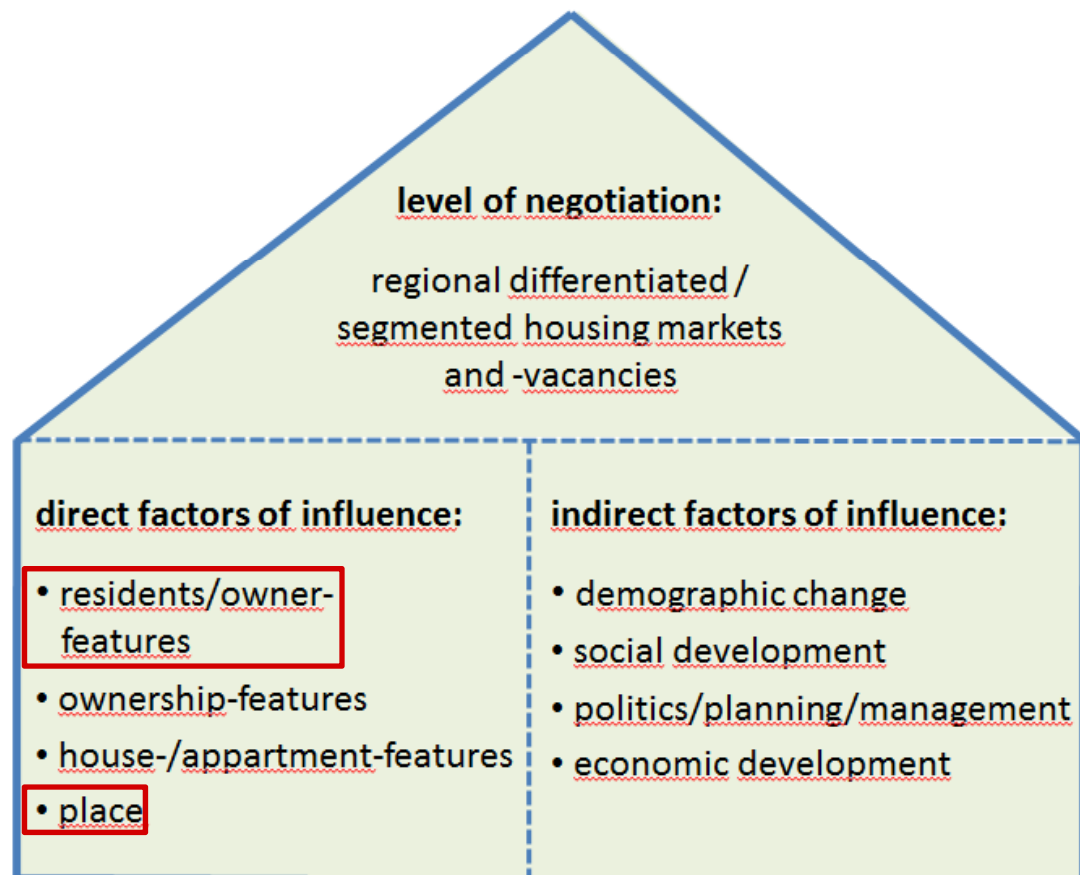
*...on the way to a
monitoring strategy*



2010

2030

Vacancy – influencing factors



Case study – rural Bavaria

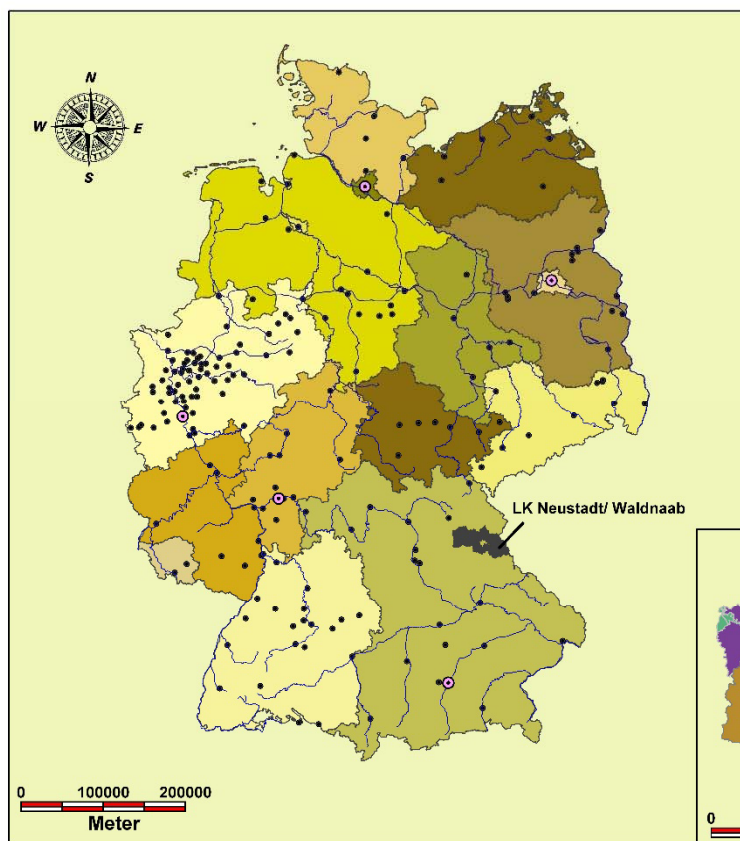
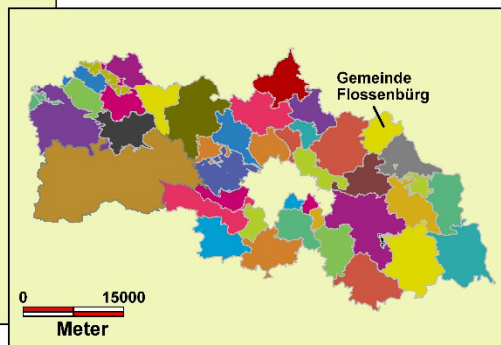
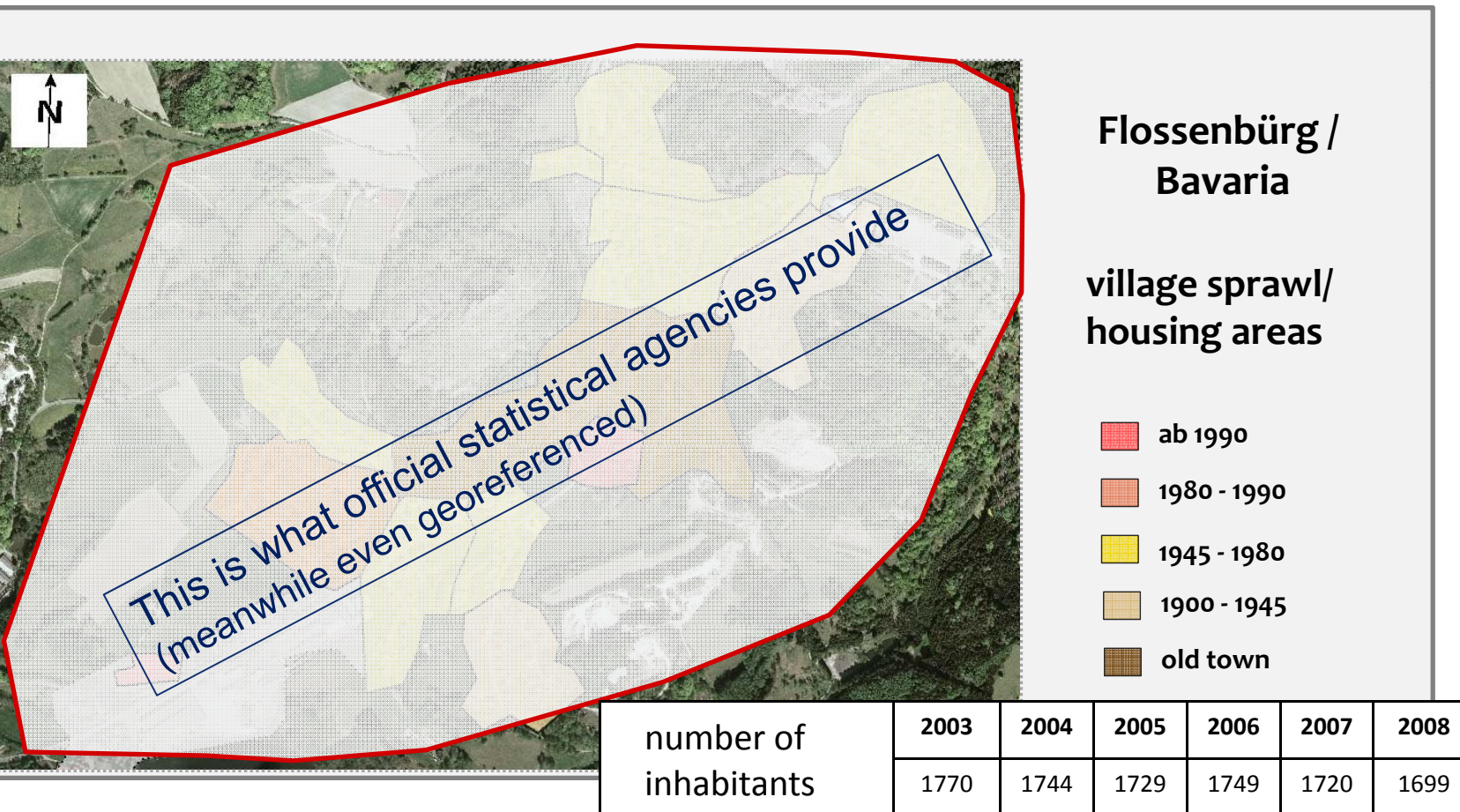


photo: www.flossenbuerg.de



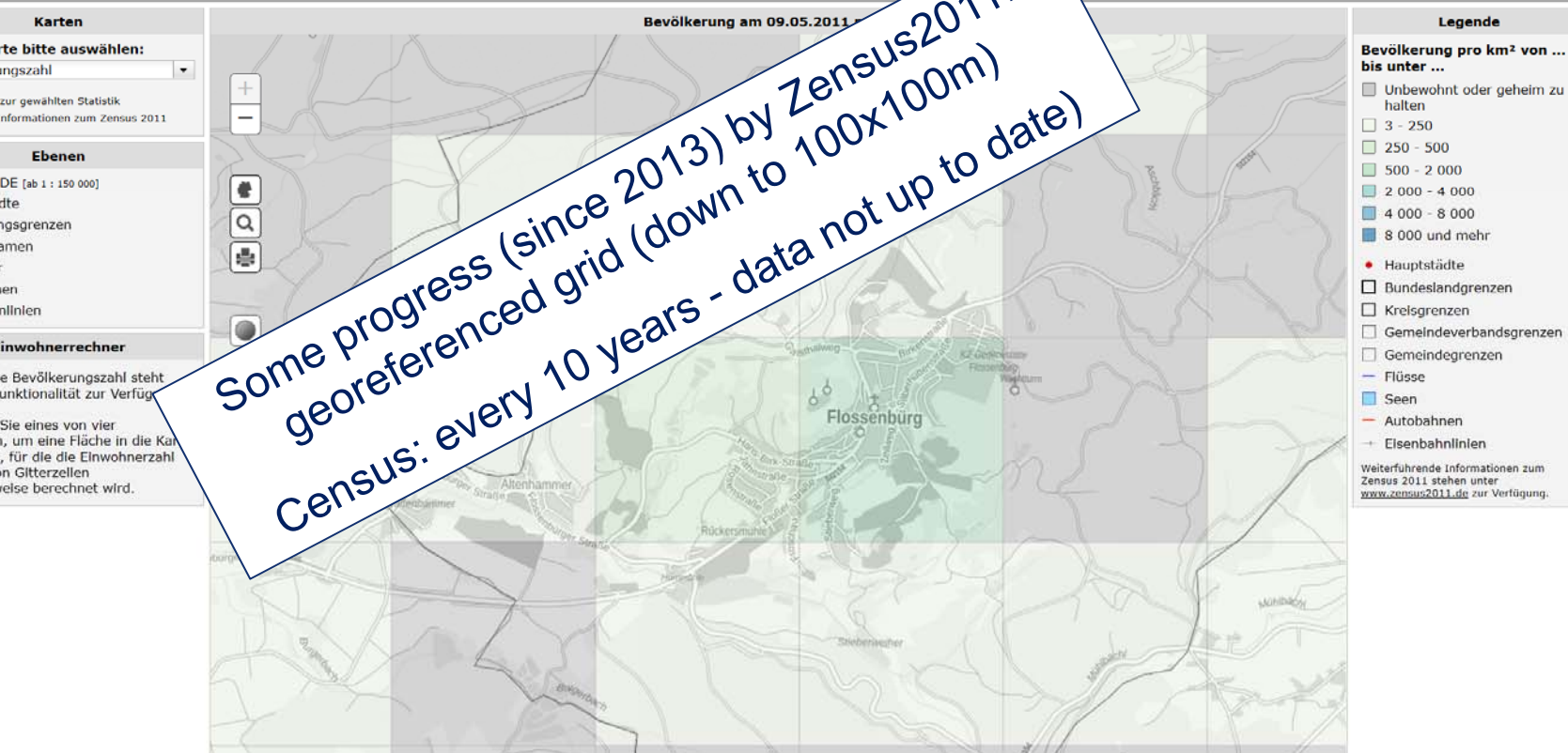
Case study – rural Bavaria



Case study – rural Bavaria

Zensus2011

STATISTISCHE ÄMTER
DES BUNDES UND DER LÄNDER



Demographic Information of living population in Rinchnach

Geburtsdatum	Geschlecht	PLZ	Ort	Ortsteil	Strasse	Hausnummer	Zusatz	Wohnungsart
18.03.1988	w	94269	Rinchnach		Musterstr.	3		HW
12.03.1958	w	94269	Rinchnach		Musterstr.	3	a	NW
12.05.1995	m	94269	Rinchnach	Stadl	Musterstr.	12		HW
12.12.1965	m	94269	Rinchnach	Grub	Musterstr.	13		HW

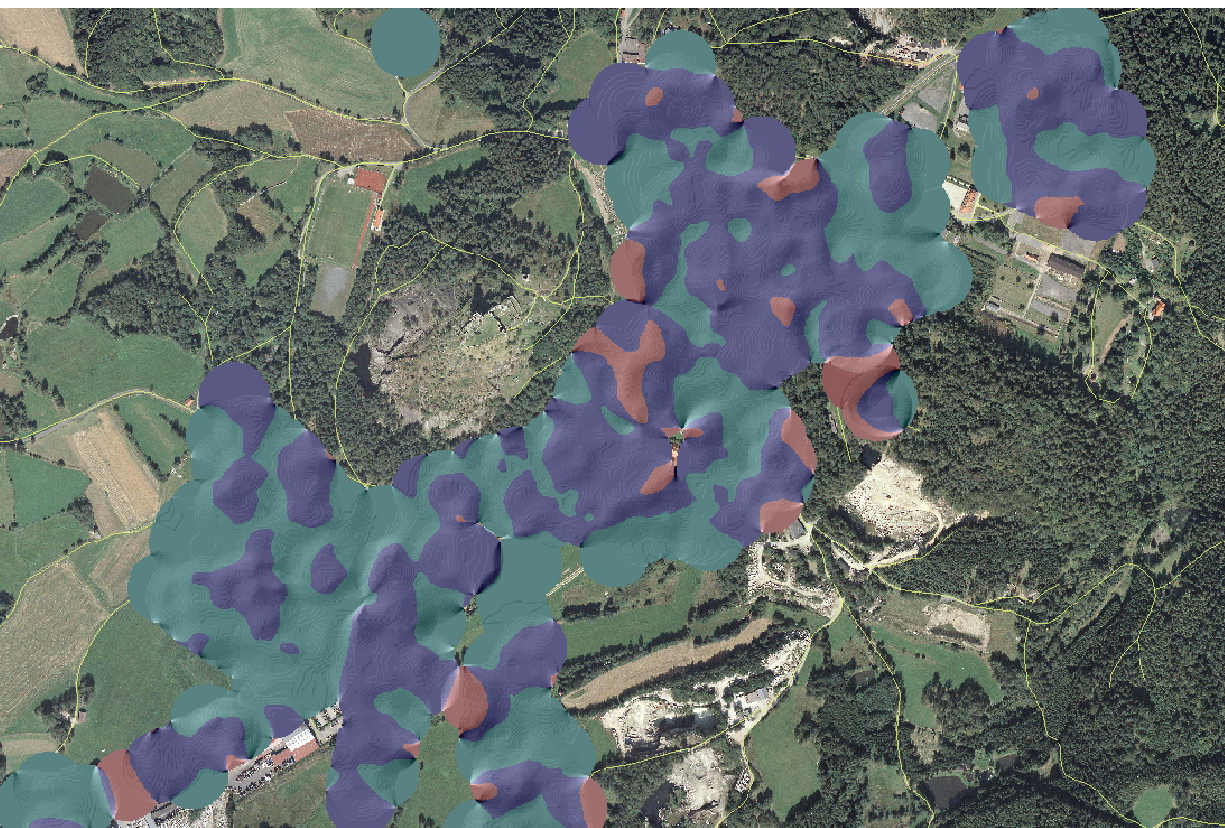
Information about changes (birth, death, migration in/to/withthin)

Veranstaltungstyp	Ereignisdatum	Geburtsdatum	Geschlecht	PLZ	Ort	Ortsteil	Strasse	Hausnummer	Zusatz	Wohnungsart
ZUZ	10.03.2008	18.03.1988	w	94269	Rinchnach		Musterstr.	3		HW
TOD	13.04.2017	12.03.1958	w	94269	Rinchnach		Musterstr.	23		NW
UMZ	12.05.2009	12.05.1995	m	94269	Rinchnach		Musterstr.	12		HW
MGZ	01.12.2005	12.12.1965	w	94269	Rinchnach		Musterstr.	2		HW
GEB	02.12.1974	02.12.1974	m	94269	Rinchnach		Musterstr.	3		HW

not georeferenced

not ready-for-planning

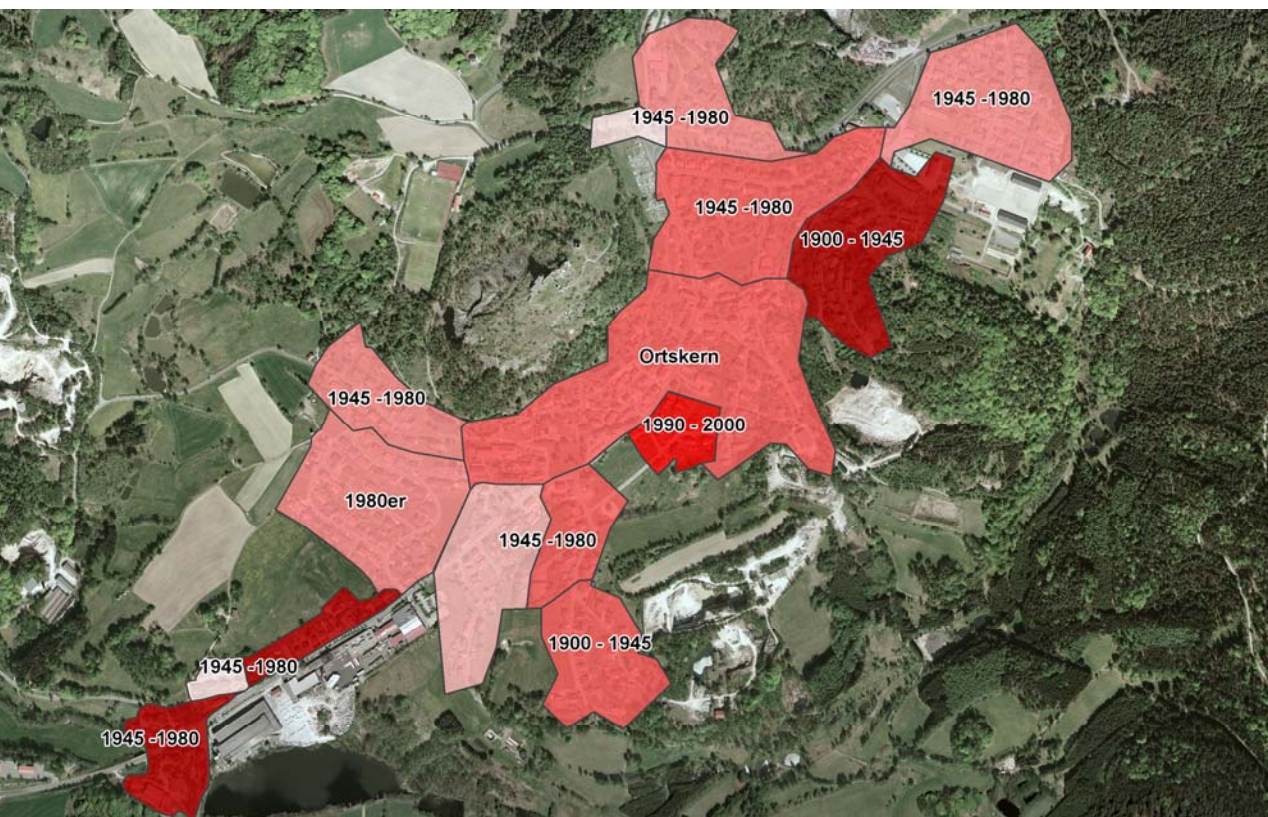
Age structure



using the municipal population register for small scale population analyses

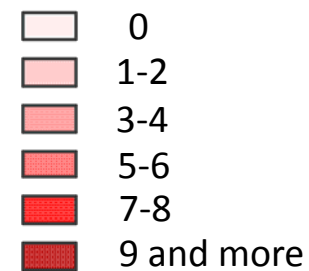
- 65 years or more
- 45-65 years
- 45 or younger

houses endangered by vacancy



using the municipal
population register
for small scale
population analyses

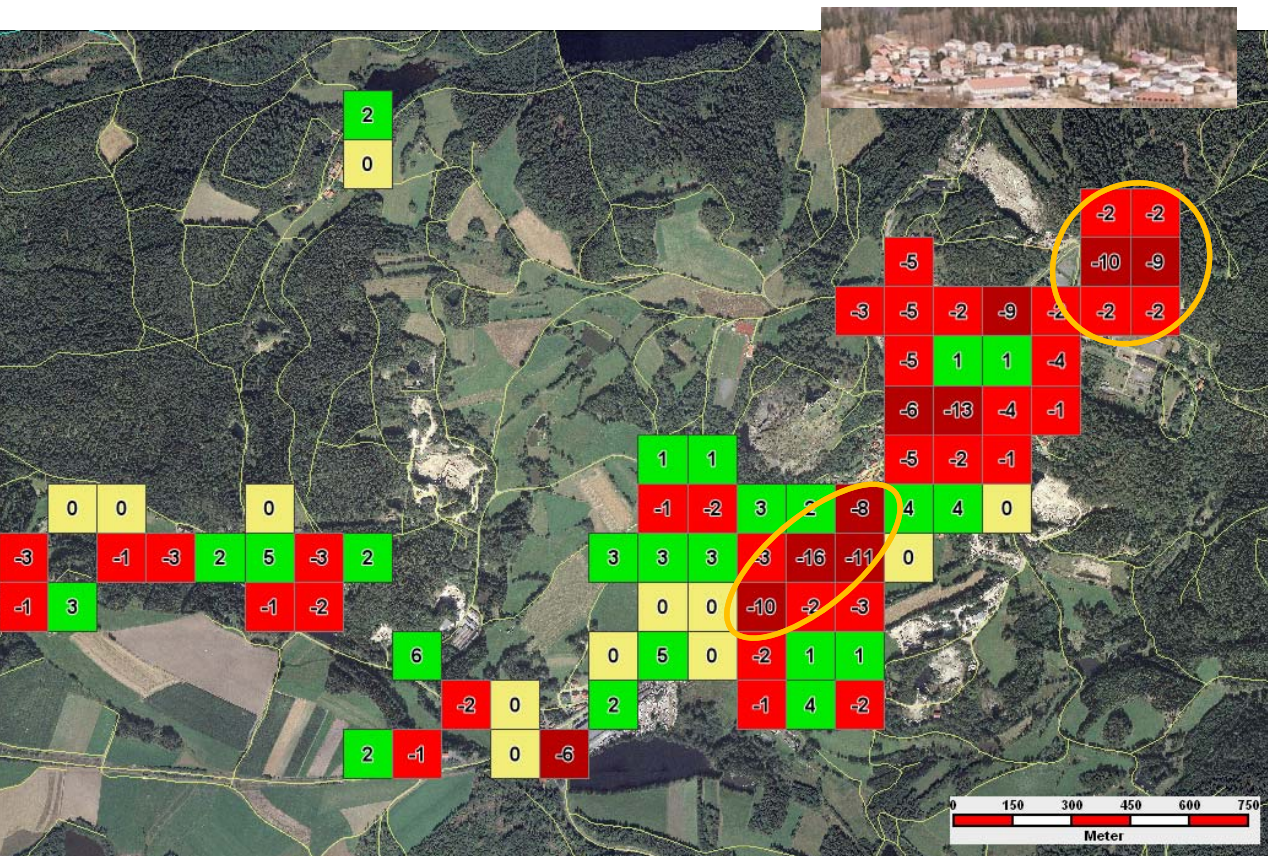
Share of houses with
vacancy risk* / per
neighbourhood



*inhabited by 1 or 2 persons being
65 years or older

(intra-urban) net migration

Single family housing
1945-1980 (mainly 1950s)

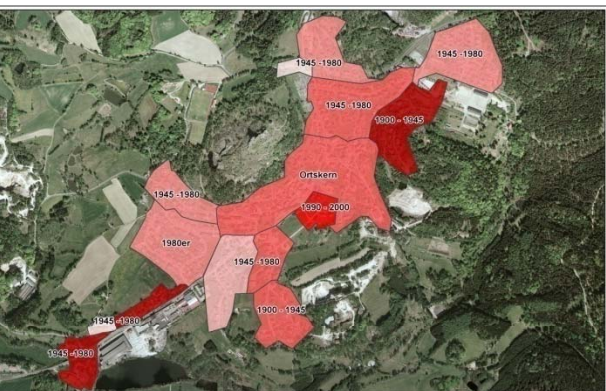


using the municipal
population register
for small scale
population analyses

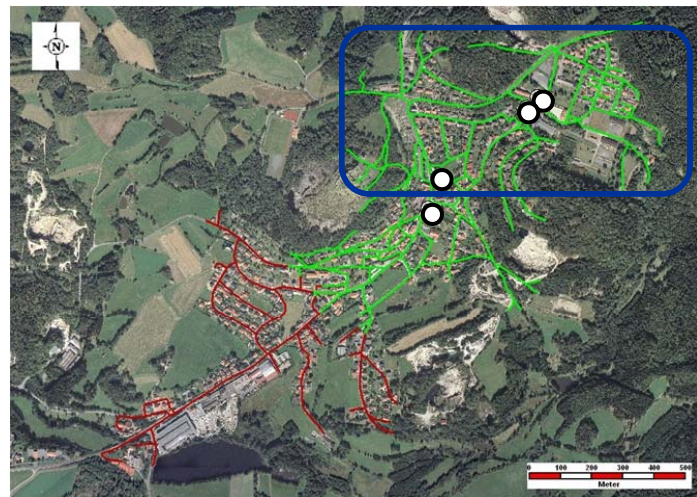
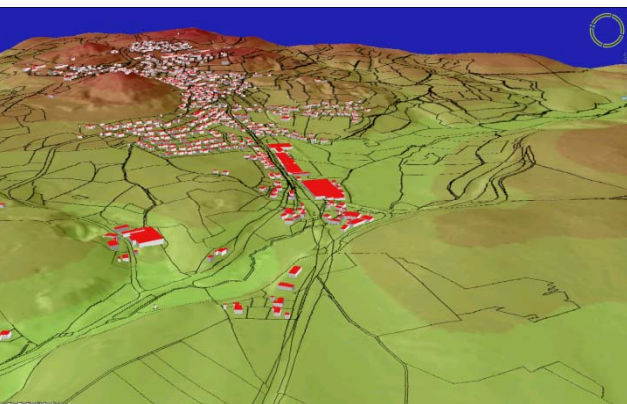
resident loss between
1999 und 2009

- - 6 persons and more
- -1 until -5 persons
- +/- 0 persons
- +1 bis +5 persons

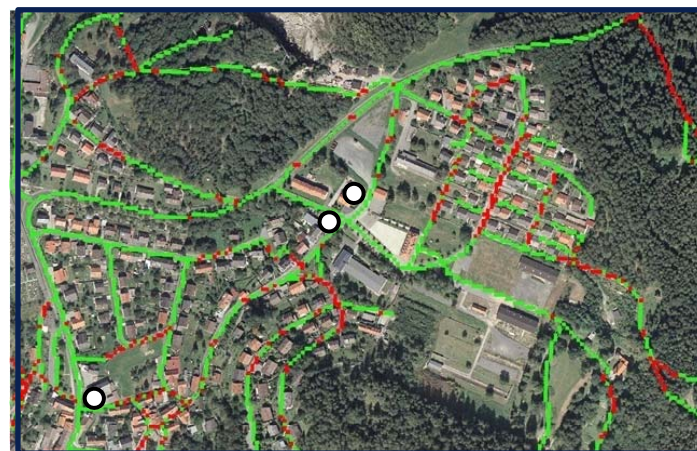
Location/ place/ accessibility



Accessibility – infrastructure of basic services within walking distance



- $\leq 500\text{ m}$ distance
- > 500 m distance
- baker, butcher, supermarket



- > 5% slope
- $\leq 5\%$ slope

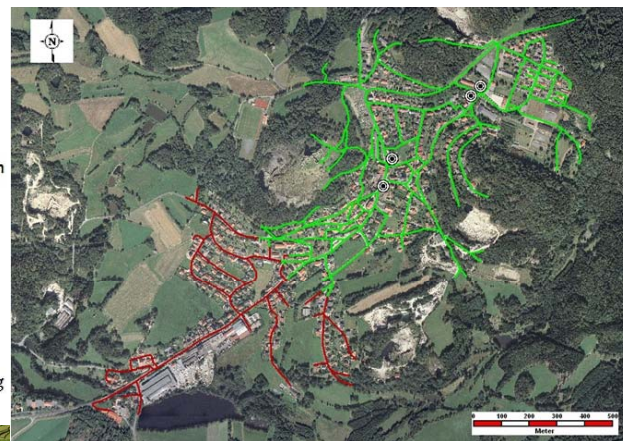
Indicators & GIS



Flossenbürg/Opf.

Steigungen der begehbaren
Wege - nach Abschnitten
(basierend auf 5m Raster)

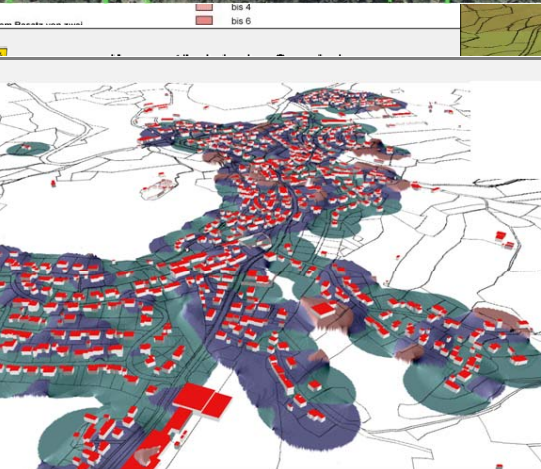
- über 5% Steigung
- bis inklusive 5% Steigung



Flossenbürg/Opf.

Erreichbarkeit
der Grundversorger
(Bäcker Metzger,
Supermark)

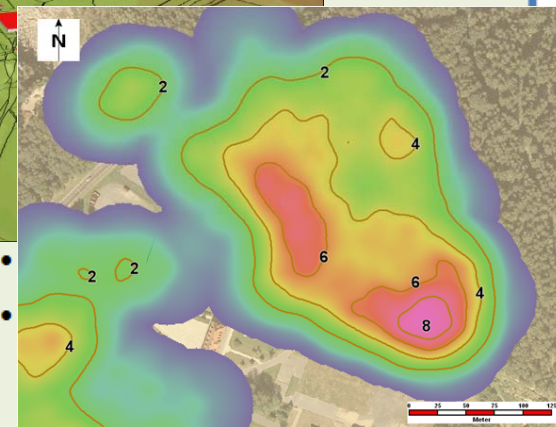
- <= 500 m Entfernung
- > 500 m Entfernung
- Versorgungseinrichtung



Flossenbürg/Opf.

Durchschnittsalter der
Einwohner
- „Altersgebirge“ mit
Flurstücken und Gebäuden
(Stand 01.08.2009)

- über 80 Jahre
- 65 bis 80 Jahre
- 46 bis 65 Jahre
- unter 45 Jahre



Flossenbürg/Opf.

Gebäude in einem
Umkreis von 25 m²
um die jeweils betrachtete
Rasterzelle (Auslösung 1 m)

- 2
- 4
- 6
- 8
- Linie gleicher Bebauungsdichte

Monitoring SFH

Structure Work: → monitoring of SFH in an intra and supra-communal setting (e.g. county-wide)

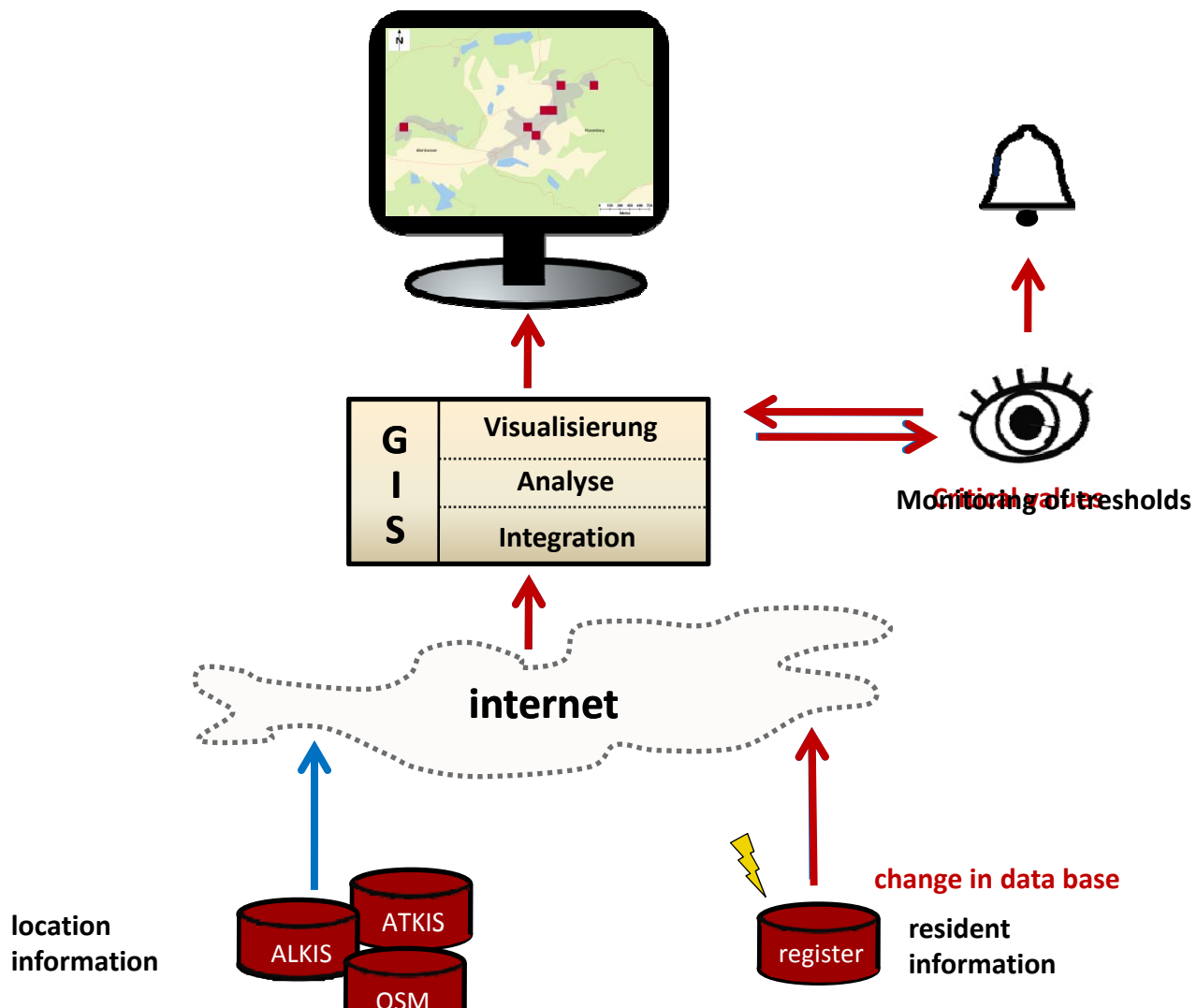
Housing conditions?

Weighting of indicators (and their spatial differences) and combining them according to the weighting

Providing this information in a supra-communal spatial data infrastructure

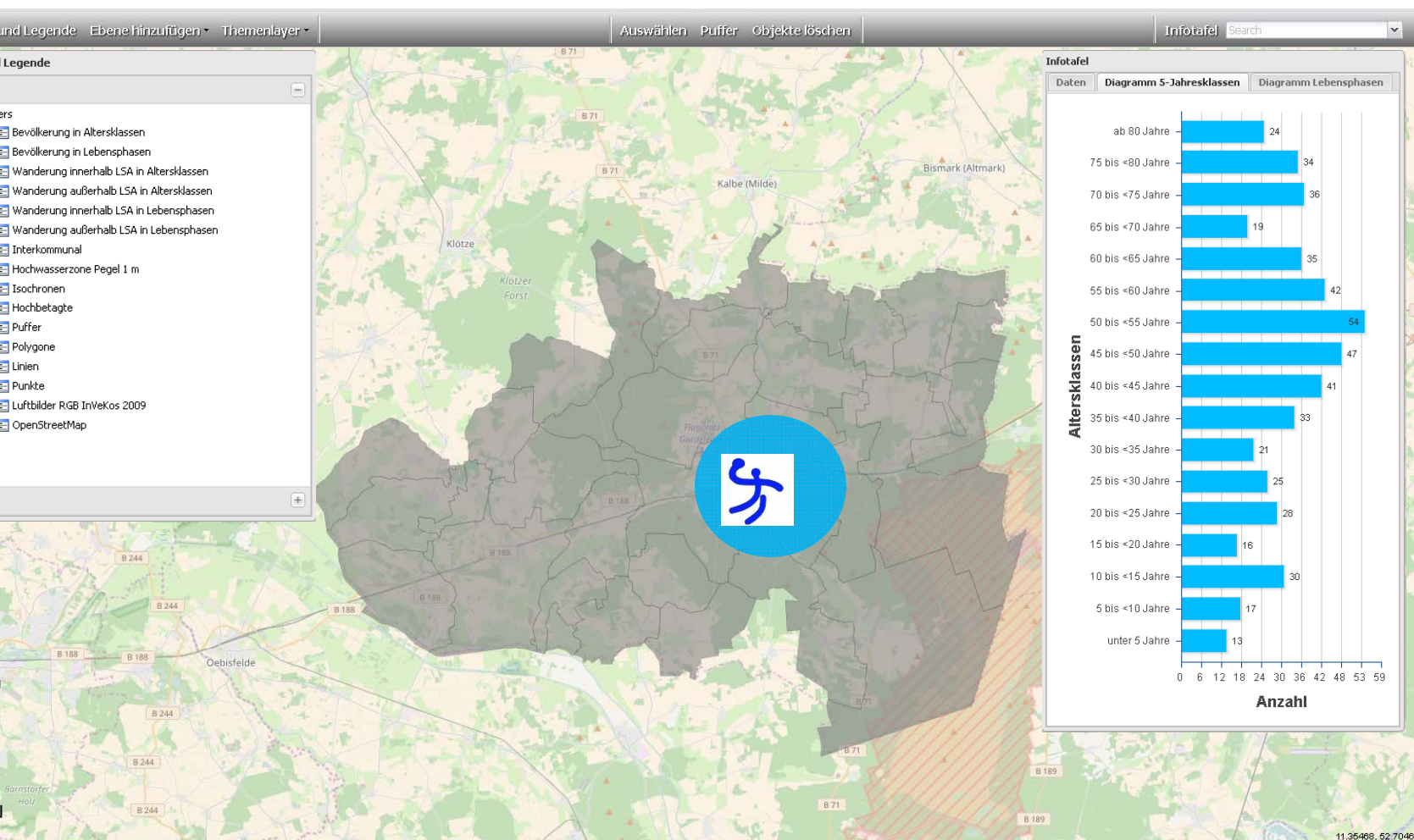
Developing clients suitable for planning support

Monitoring SFH



Thank you for your attention!

Monitoring SFH



What has been done so far:

Selection of indicators

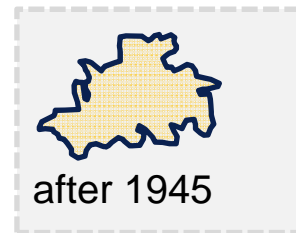
Identification of suitable spatial data and analyses for
calculating these indicators

proof of concept in Flossenbürg

Changing villages – structure, demographics



before 1945



after 1945

Year: Inhabitants	
1829:	1101
1939:	2011
1961:	3626
2011:	10.640

2000-2011
-2,3%
(Hessenagentur)

Fürth Odw. 2015,
aerial picture: google maps



as
of 773
at time

